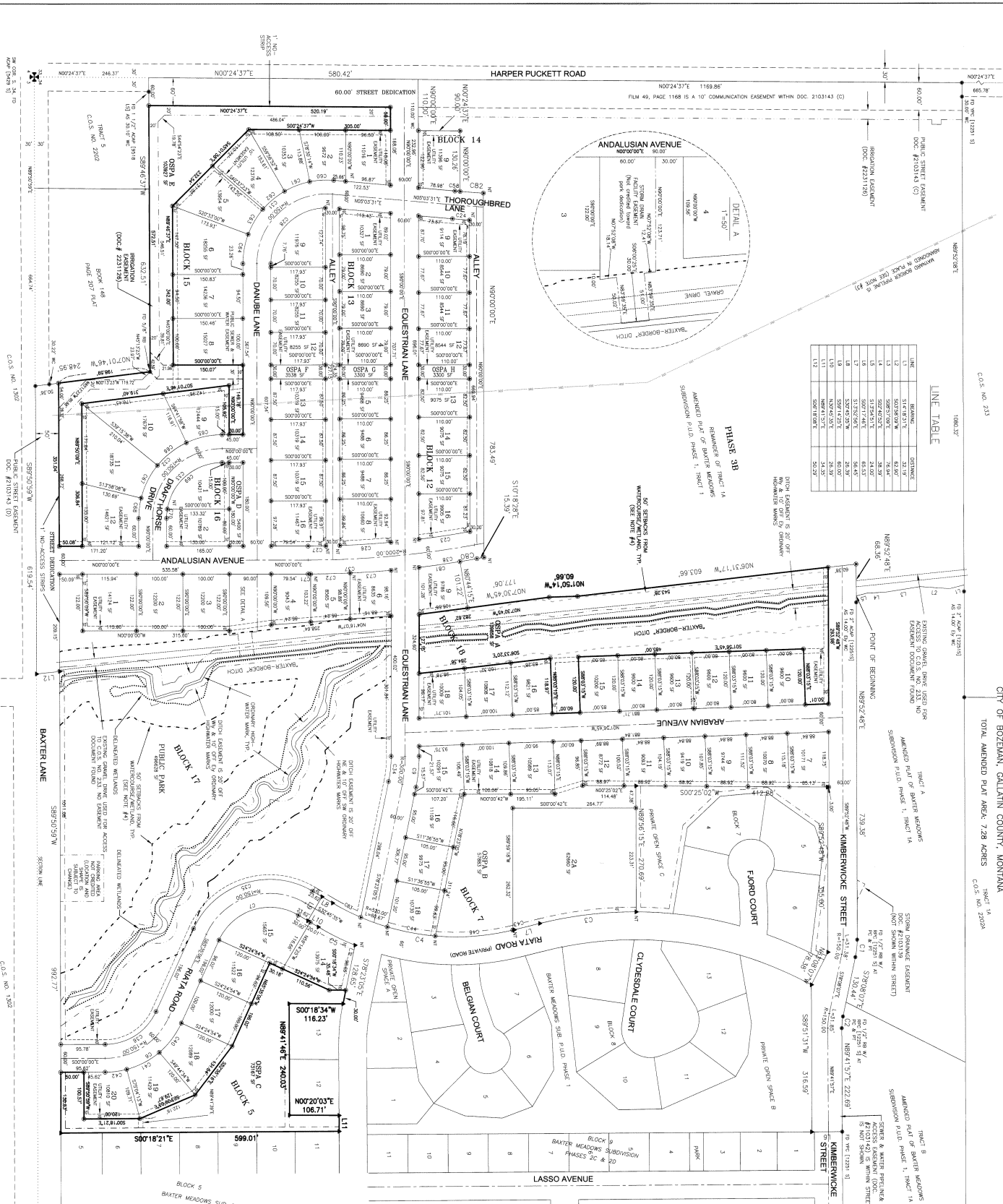


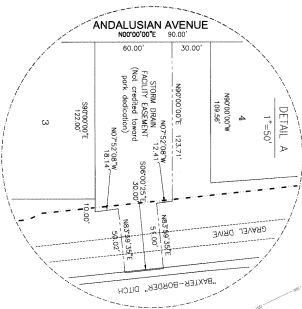
SURVEY PURPOSE: TO CORRECT AREA IN OSPA A OF BLOCK 18, AND EASEMENTS IN OSPA E OF BLOCK 15 AND OSPA C OF BLOCK 5. SURVEY COMMISSIONER: MARK WAINWICK

AMENDED PLAT OF OPEN SPACE/PUBLIC ACCESS, A, BLOCK 18 AND OPEN SPACE/PUBLIC ACCESS, E, BLOCK 15, AND OPEN SPACE/PUBLIC ACCESS, C, BLOCK 5 OF BAXTER MEADOWS SUBDIVISION, PHASE 3A A CORRECTION PLAT

LOCATED IN THE SOUTHWEST QUARTER OF SECTION 34, TOWNSHIP 1 SOUTH, RANGE 5 EAST, P.M.M., CITY OF BOZEMAN, GALLATIN COUNTY, MONTANA. TOTAL AMENDED PLAT AREA: 7.28 ACRES. C.O.S. NO. 2232A



LINE TABLE with columns: LINE, BEARING, DISTANCE. Lists lines 1 through 13 with their respective bearings and distances.



LEGAL DESCRIPTION, CERTIFICATE OF SURVEY, LEGEND, and TD&H logo. Includes a north arrow, scale bar (0-300 feet), and contact information for Thomas, Dean & Hoskins, Inc.