

AMENDED GREENHILLS RANCH SUB.

J-356A

CORRECTION PLAT OF GREENHILLS RANCH SUBDIVISION

LOCATED IN THE W 1/2, SECTION 15, T. 3 S., R. 5 E. OF P.M.M., GALLATIN COUNTY, MONTANA

EASEMENT NOTES

1. Right of Way Easement recorded in Book 103 of Deeds, Page 81, conveys an easement to Montana Power Company 1/4 of an electric transmission system and 1.3 S., R. 5 E. The location and width of said easement are not specified in the document.
2. Right of way easement recorded on Film 33, Page 1458 conveys an easement 20' wide to Cottonwood Road for an electric power line. Said transmission system crosses the Section 15/20' property line. Said easement is 20' wide and is located in Zone D. The location of the easement is not specified in the document.

NOTES

1. All new lot corners shall be built to the standard contained in Section 7.6 of the Gallatin County Subdivision Regulations dated 2/17/78.
2. All interior lots shall be limited to one driveway access. Each access shall be at least 7.5 feet from the nearest intersection with Cottonwood Road.
3. No wetlands are present on the herein described property except as shown hereon.
4. The entire property shown hereon is outside of any designated 100' flood zone pursuant to FEMA Panel 500027 0420 B (Panel not printed - area in Zone D).

UTILITY EASEMENTS

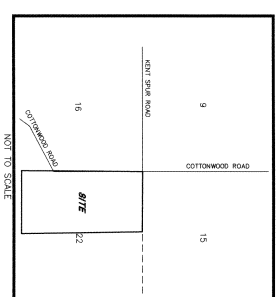
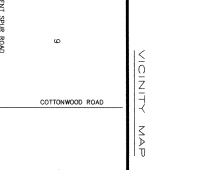
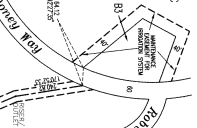
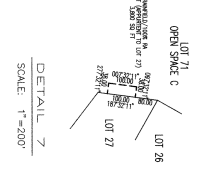
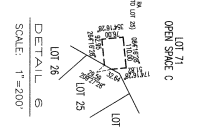
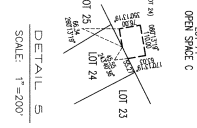
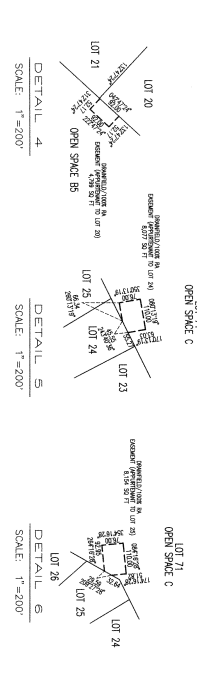
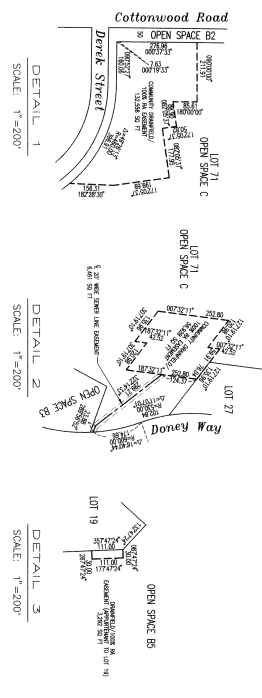
20' FRONT AT ALL STREETS
20' ROAD OF ALL LOTS

AREA TABULATION

| | | |
|--------------------|------------------|----------------|
| OPEN SPACE A = | 2,531,400 SQ FT | 58.1130 ACRES |
| OPEN SPACE B1 = | 2,296,011 SQ FT | 52.7204 ACRES |
| OPEN SPACE B2 = | 43,560 SQ FT | 1.0000 ACRES |
| OPEN SPACE B3 = | 371,289 SQ FT | 8.5238 ACRES |
| OPEN SPACE B4 = | 679,714 SQ FT | 15.6041 ACRES |
| OPEN SPACE C = | 4,289,957 SQ FT | 98.4838 ACRES |
| TOTAL OPEN SPACE = | 10,373,579 SQ FT | 238.1446 ACRES |
| AREA OF LOTS = | 3,100,866 SQ FT | 71.1815 ACRES |
| AREA OF ROAD = | 884,348 SQ FT | 20.3018 ACRES |
| TOTAL AREA = | 14,358,893 SQ FT | 329.6279 ACRES |



SHEET 2 OF 2



LEGAL DESCRIPTION
The West half of Section 15, Township 3 South, Range 5 East of P.M.M., Gallatin County, Montana, EXCEPT Tract A, Certificate of Survey No. 1126, according to the plat thereof, on file and of record in the office of the Clerk and Recorder, Gallatin County, Montana.
Area = 14,358,893 square feet, 329.6279 acres or 1,333,956.4 square meters. Subject to existing easements.

CERTIFICATE OF SURVEYOR

I, Mark A. Chandler, Professional Engineer and Land Surveyor No. 91883, do hereby certify that between the same parties and in accordance with the provisions of the Montana Subdivision and Platting Act, Sections 76-3-101 through 76-3-625 M.C.A., and the Gallatin County Subdivision Regulations.
Dated this 21st day of July, 2003.
Mark A. Chandler
Montana Registration No. 91883

CLERK AND RECORDER

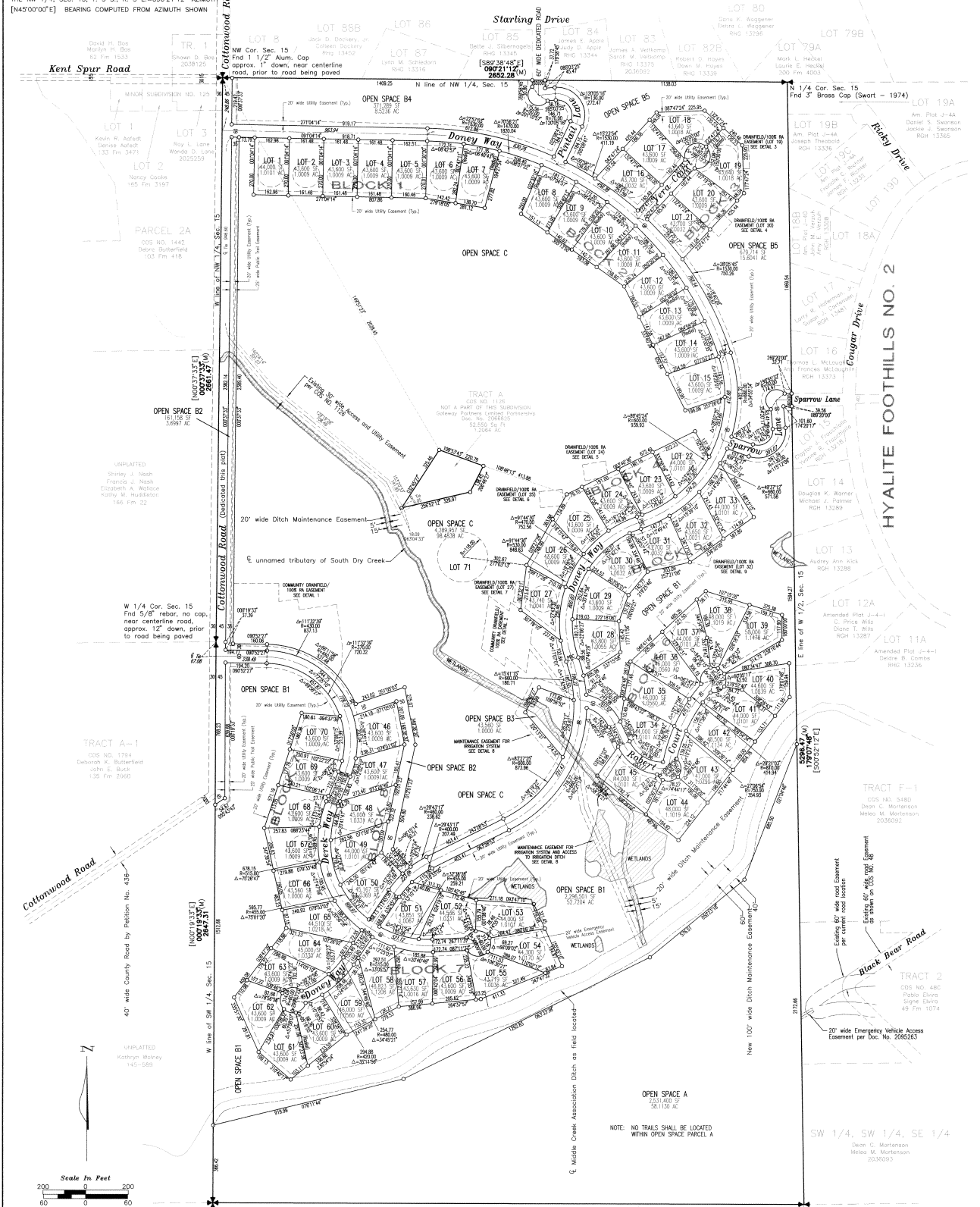
I, Shelley Vance, Clerk and Recorder of Gallatin County, Montana, do hereby certify that the foregoing instrument was filed in my office at Helena, Montana, on this 21st day of July, 2003, and recorded in Book 3 of Deeds, Page 1458 of said county. I am this day of record of the Clerk and Recorder, Gallatin County, Montana.
Document Number 2114812
By: _____ Deputy Clerk and Recorder

#01437(M)1

CORRECTION PLAT OF GREENHILLS RANCH SUBDIVISION LOCATED IN THE W 1/2, SECTION 15, T. 3 S., R. 5 E. OF P.M.M., GALLATIN COUNTY, MONTANA

REASON FOR SURVEY: TO CORRECT LOT NUMBERING ERRORS. OWNER: Gateway Partners Limited Partnership. LEGEND: (R) RECORD DISTANCE OR AZIMUTH, (M) MEASURED DISTANCE OR AZIMUTH, etc.

HYALITE FOOTHILLS NO. 1



Scale in Feet (0-200) and Scale in Meters (0-60). Logo for C&H ENGINEERING AND SURVEYING, INC. with contact information.

2114812. UNPLATTED. Kathryn Wolney 145-589. Includes a barcode.